



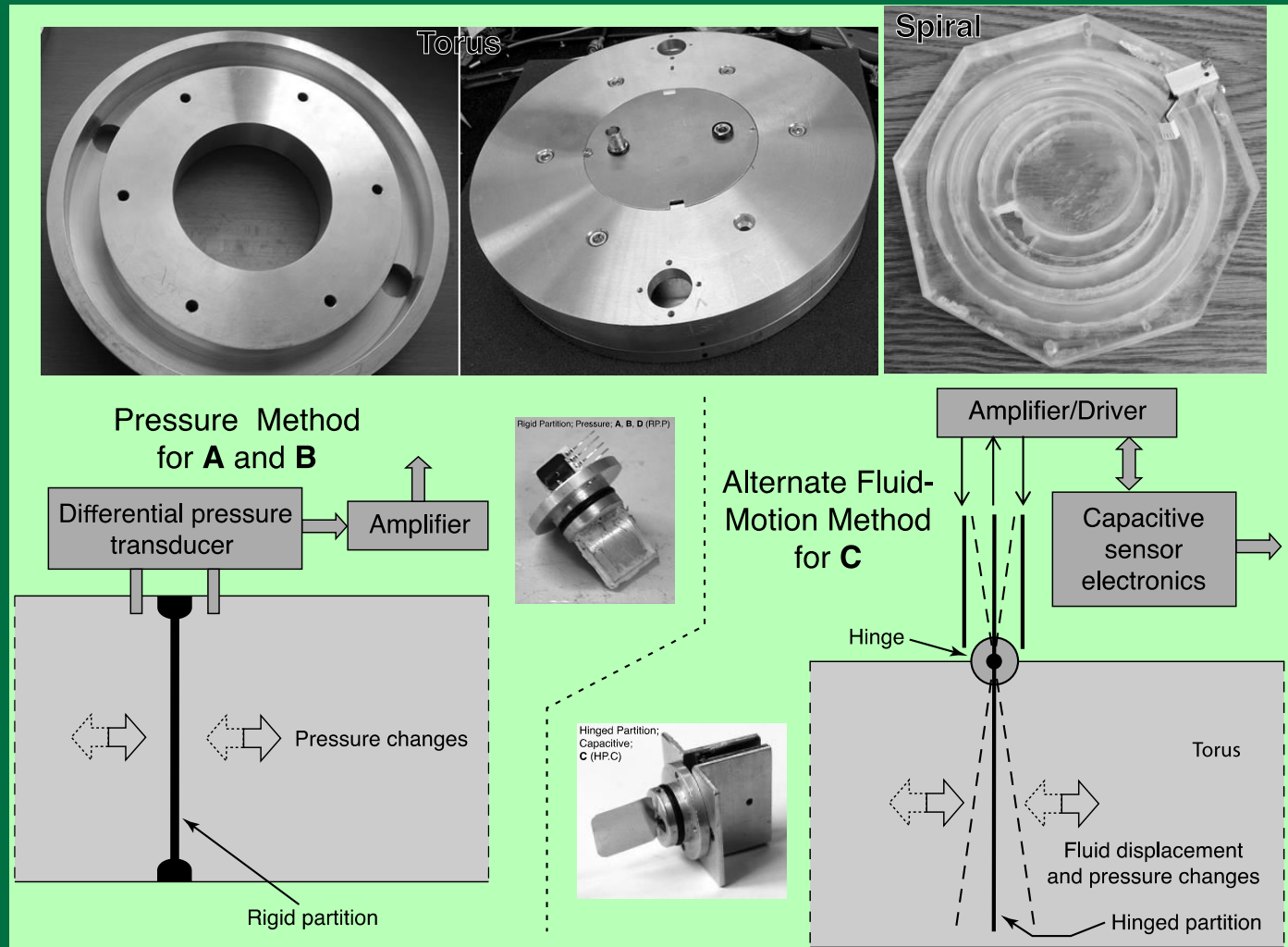
New model of ring liquid sensor for rotational ground displacement

*Jan T. Kozák and Petr Jedlička
(presented by John R. Evans)*

Most Recent Results

BSSA paper resubmitted last week

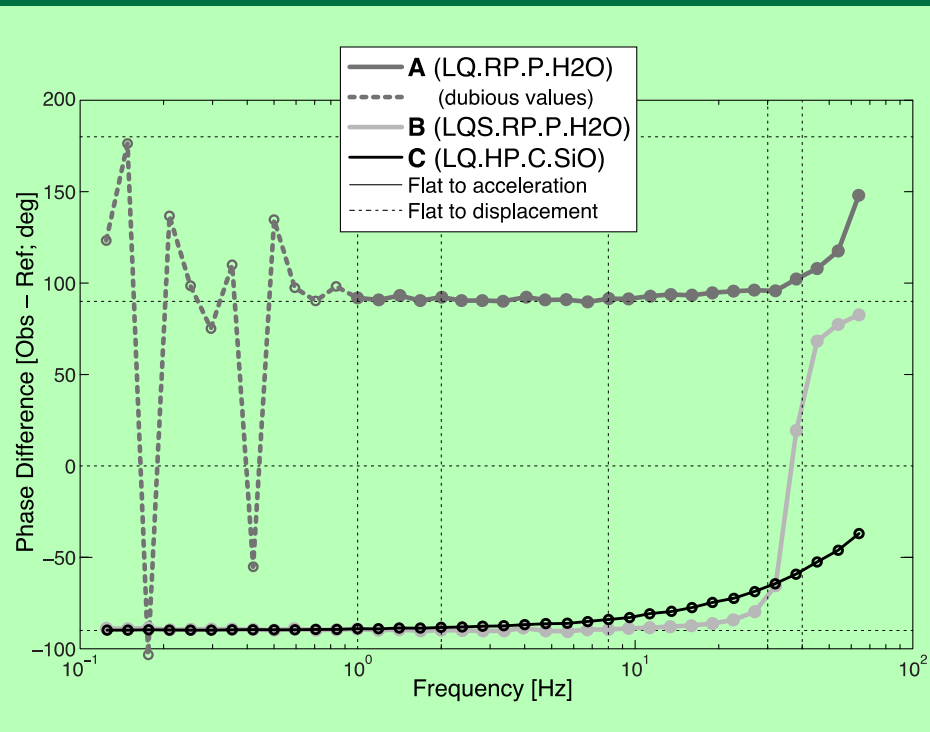
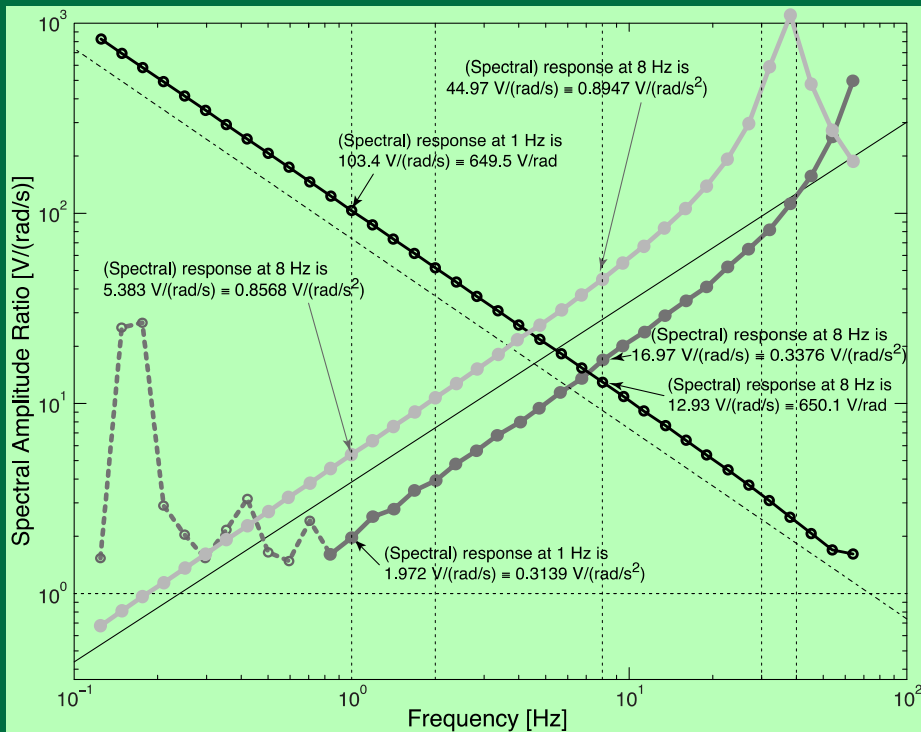
- Results summarized here



Type Examples

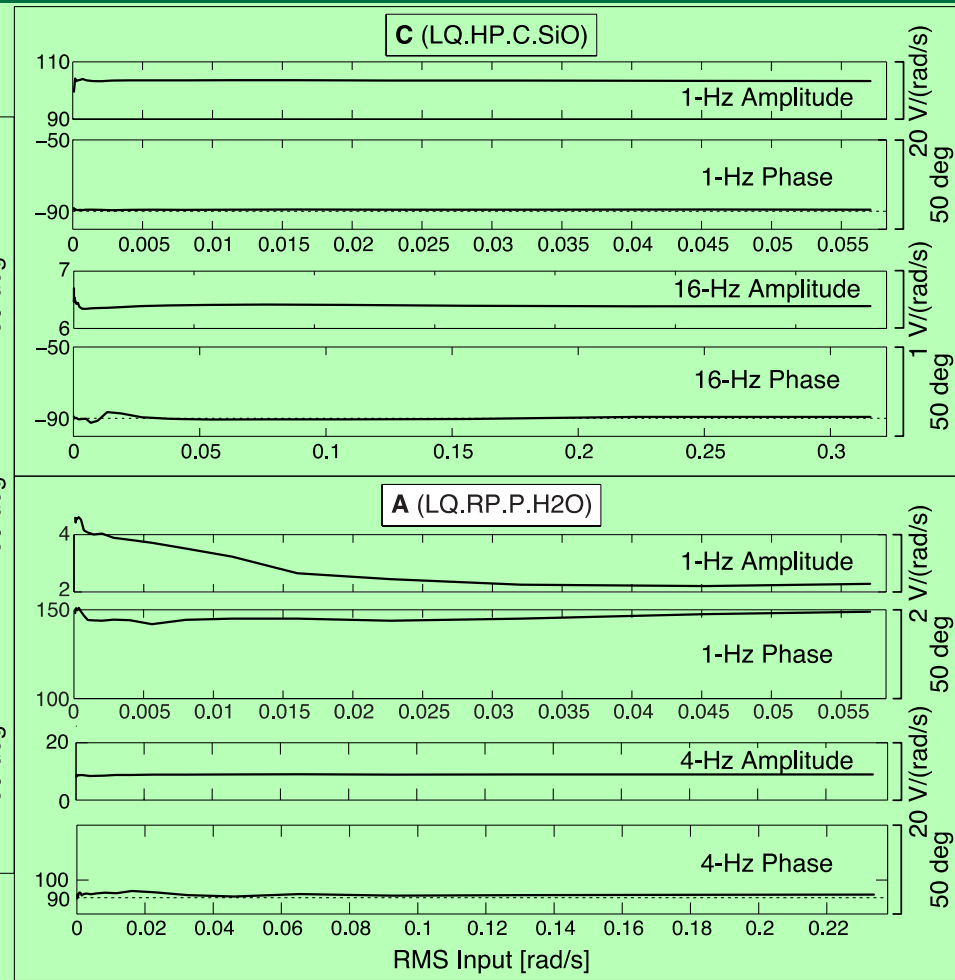
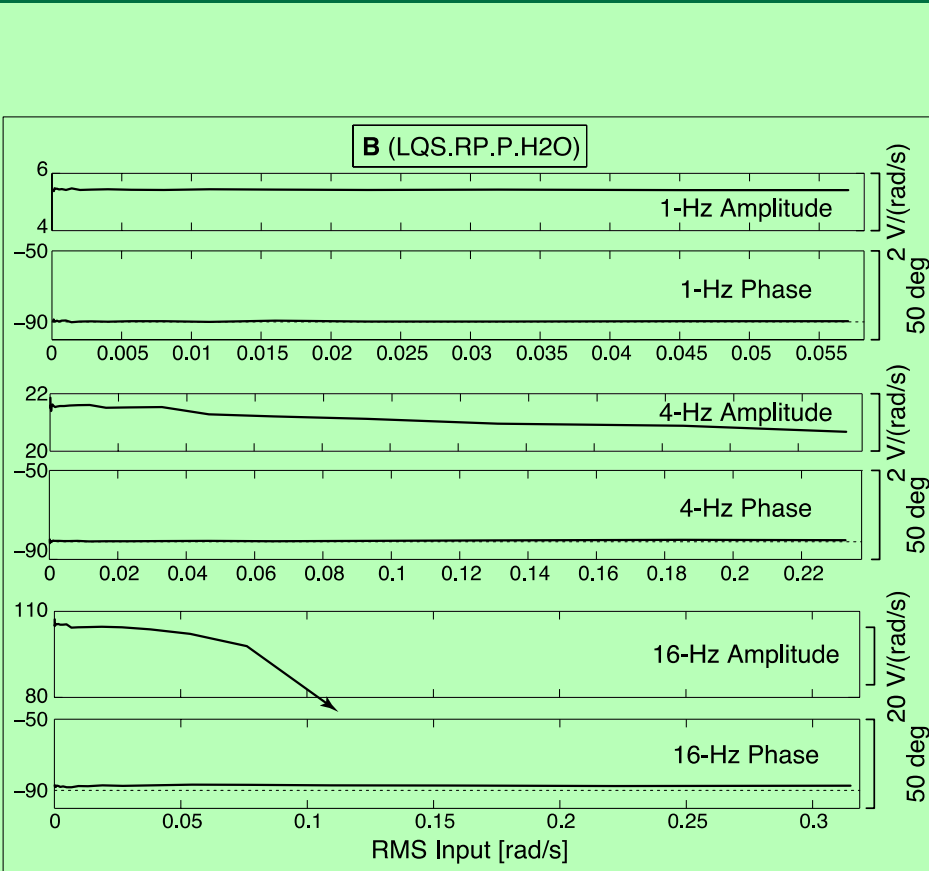
Acceleration-proportional
Displacement proportional
Mixed response

- Displacement proportionality eliminates integrations



Linearity

Note linearity of C, the displacement-proportional one



We Have a "Final" Design

Hypothetical Design of Mature Prototype

(J. Evans, P. Jedlicka, and J. Kozák; version of 18 September 2015)

